



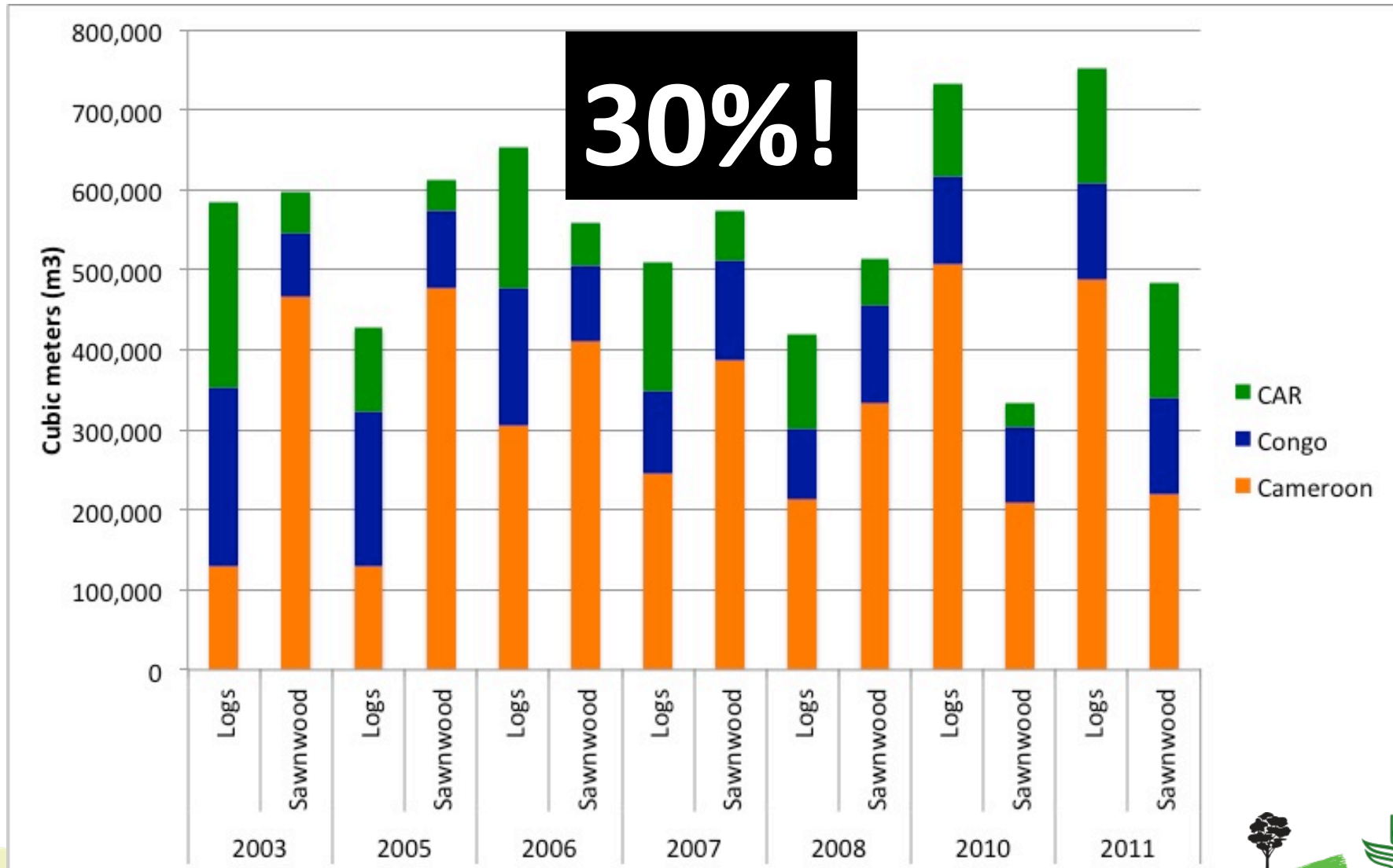
Timber production, trade and flows in Cameroon: Where to look for?



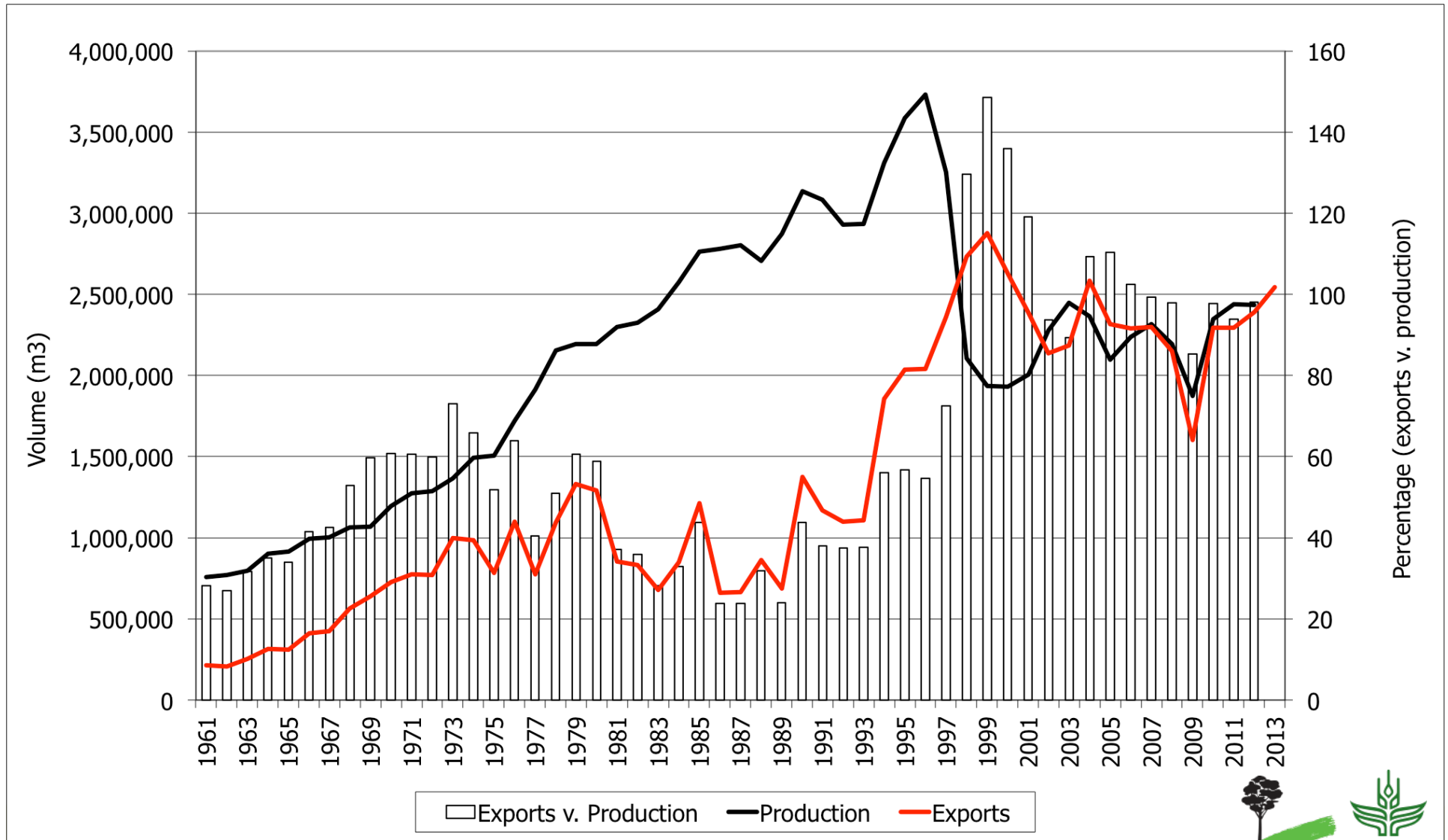
Center for International Forestry Research

Paolo Omar Cerutti p.cerutti@cgiar.org

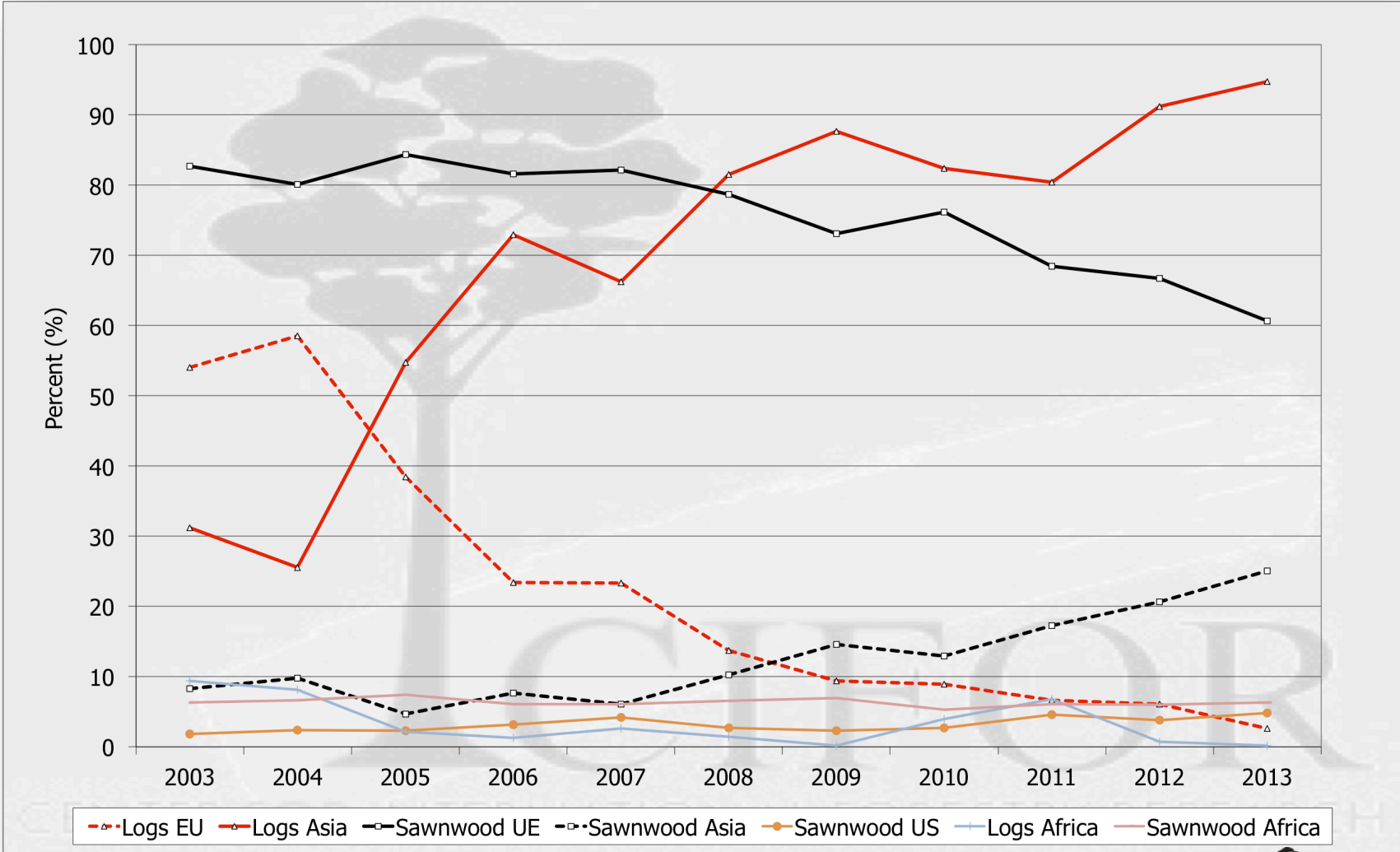
What comes into the country?



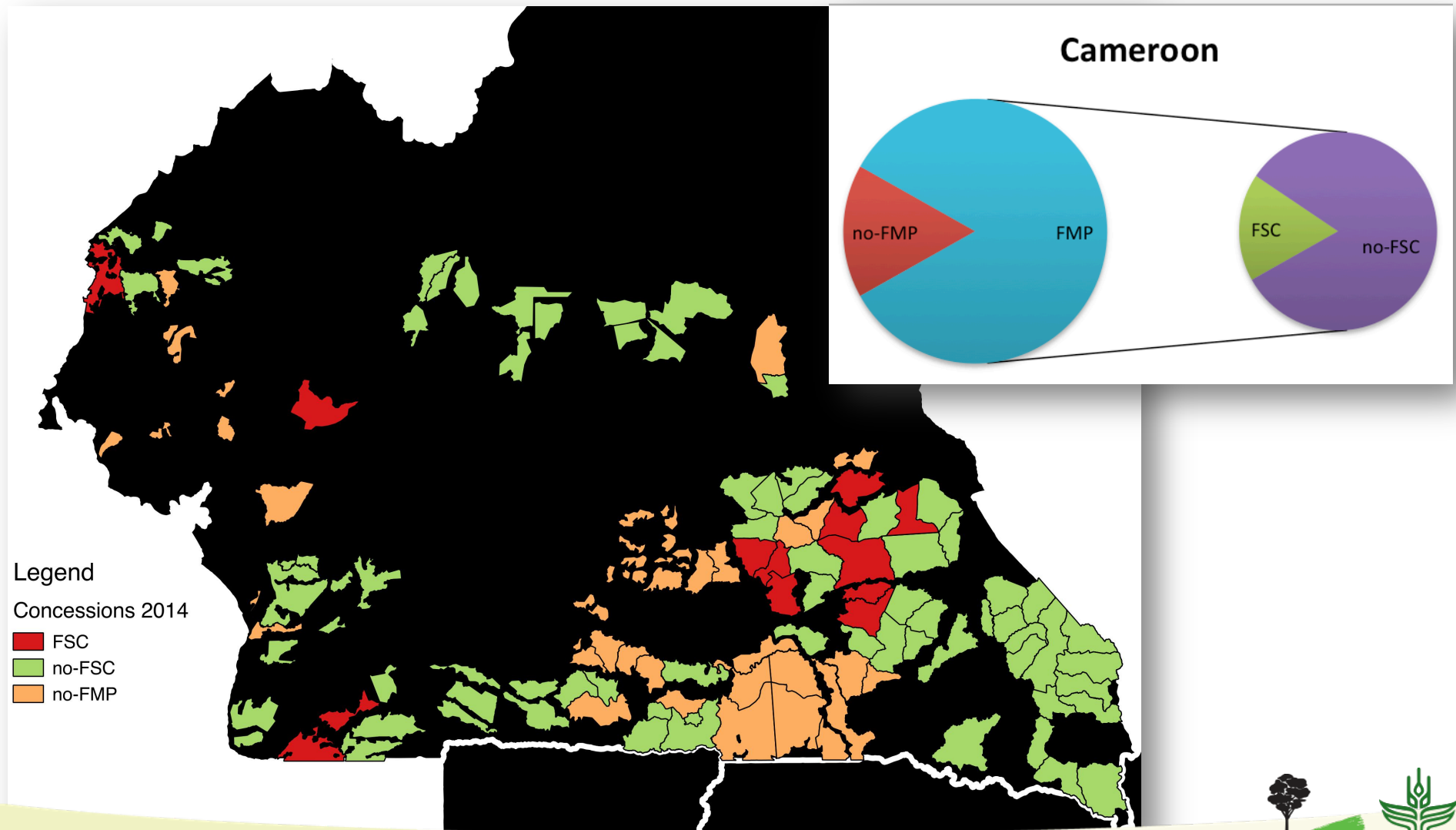
Production and exports (formal)



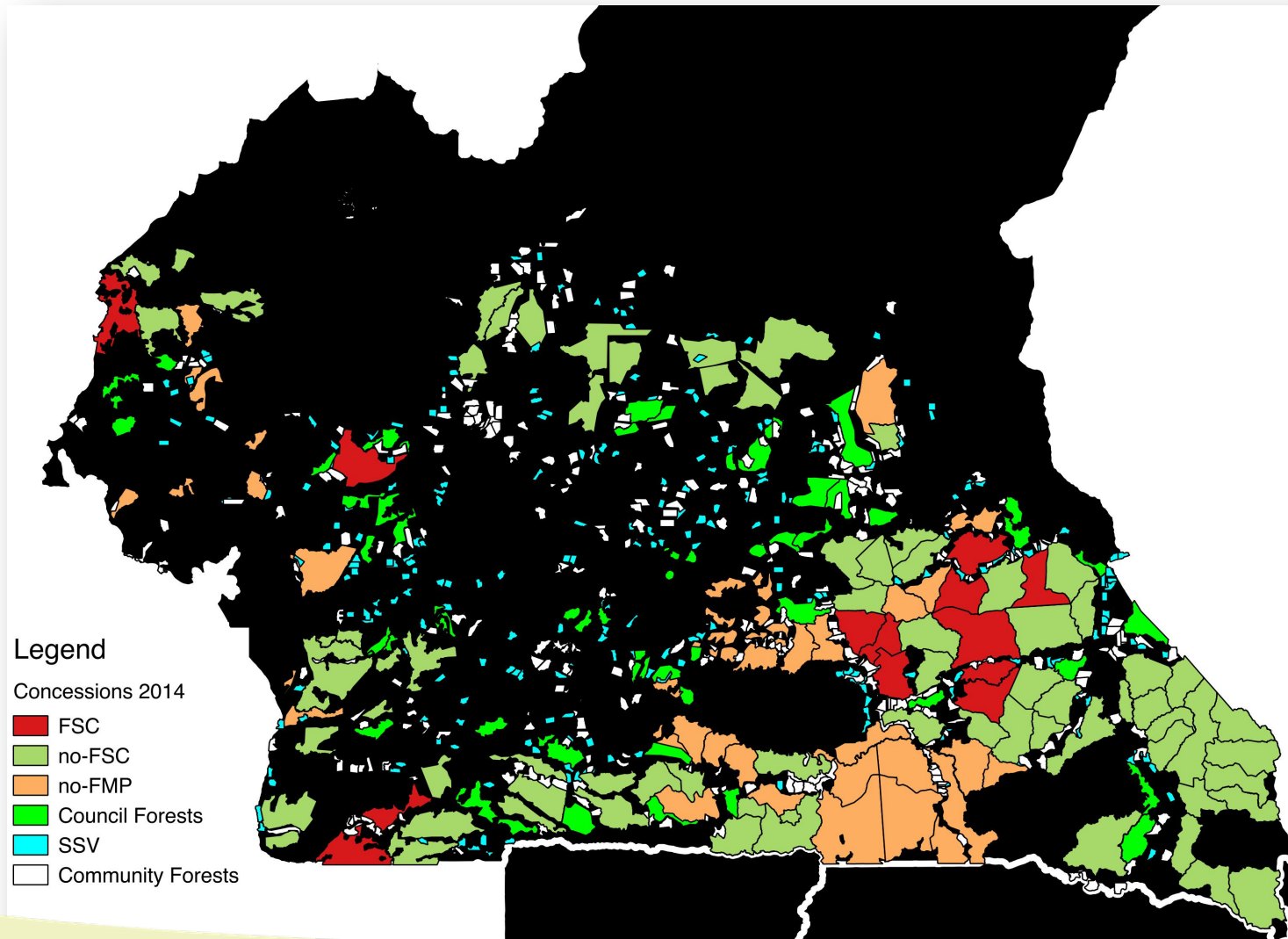
Where to?



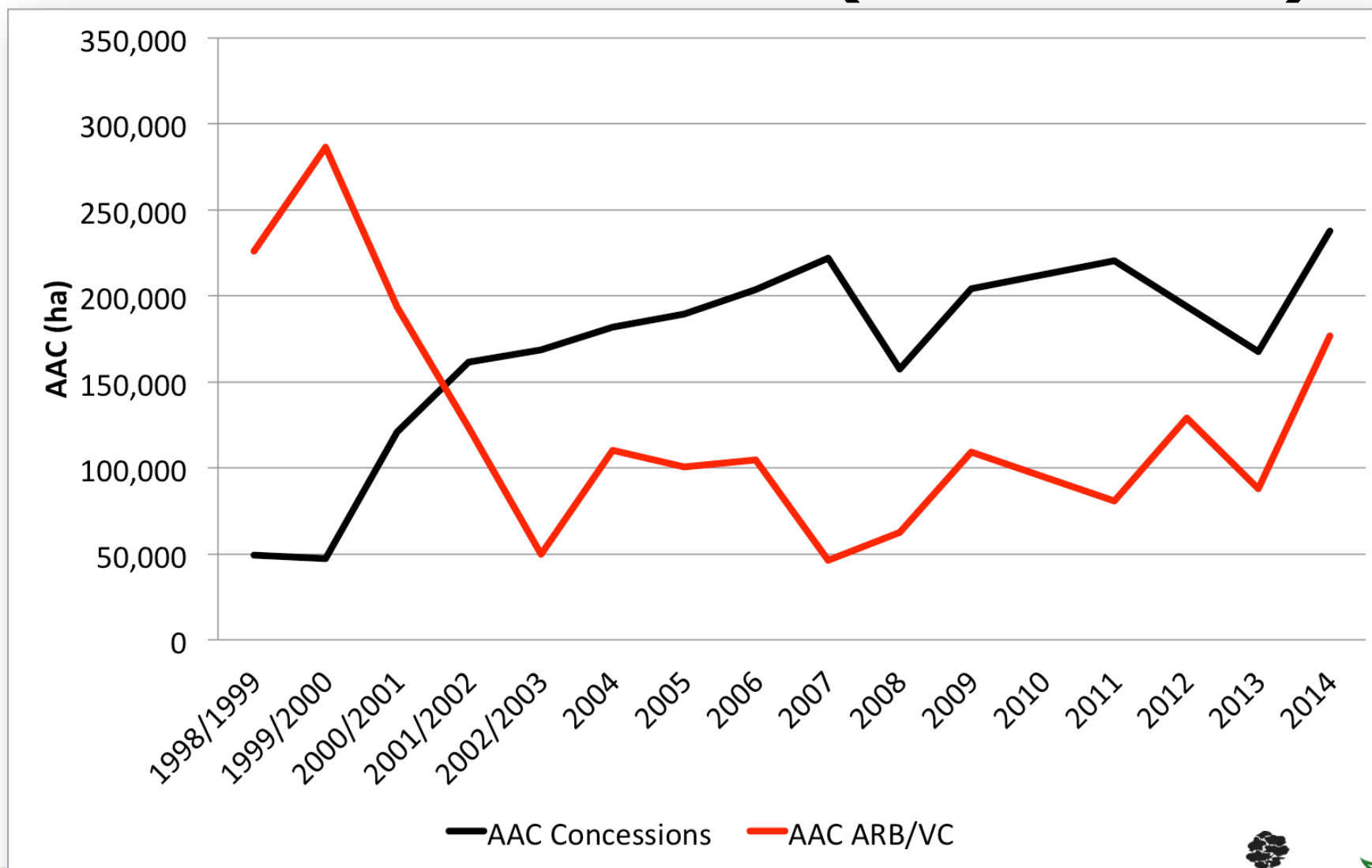
FLEGT licences...



...with background noise

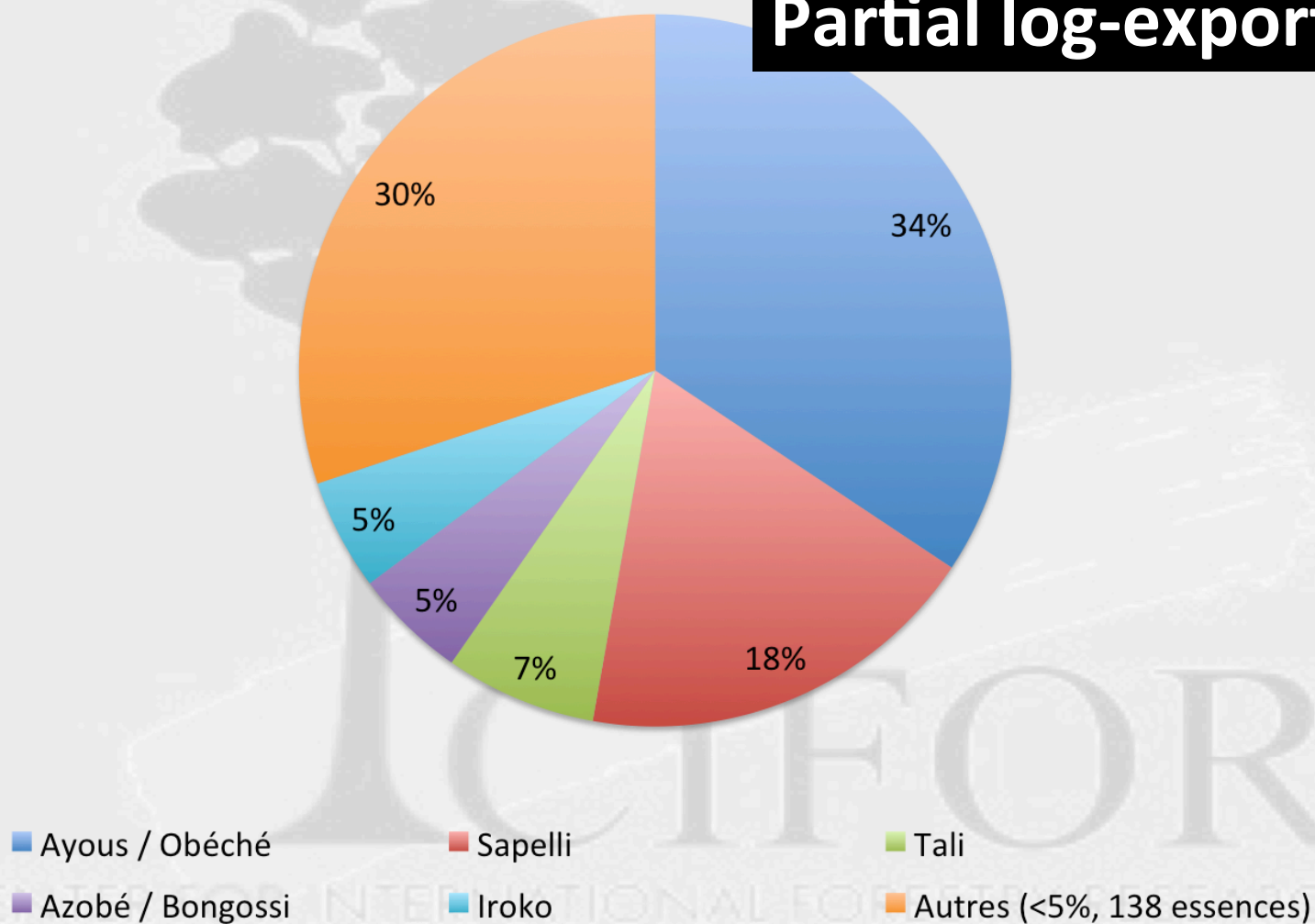


Production – Titles (1998-2014)



Production – Species (1998-2010)

Partial log-export ban!



Ayous / Obéché

Sapelli

Tali

Azobé / Bongossi

Iroko

Autres (<5%, 138 essences)



CIFOR

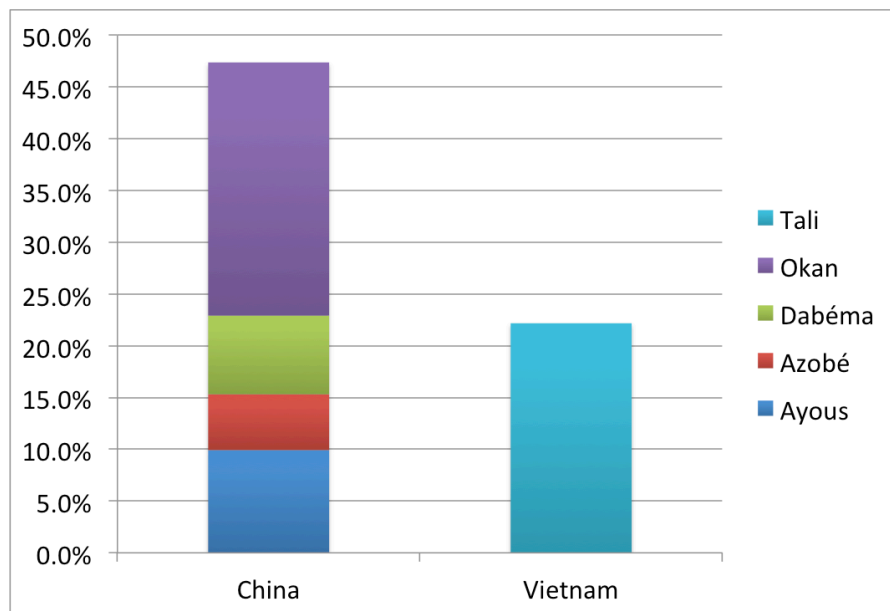


CGIAR

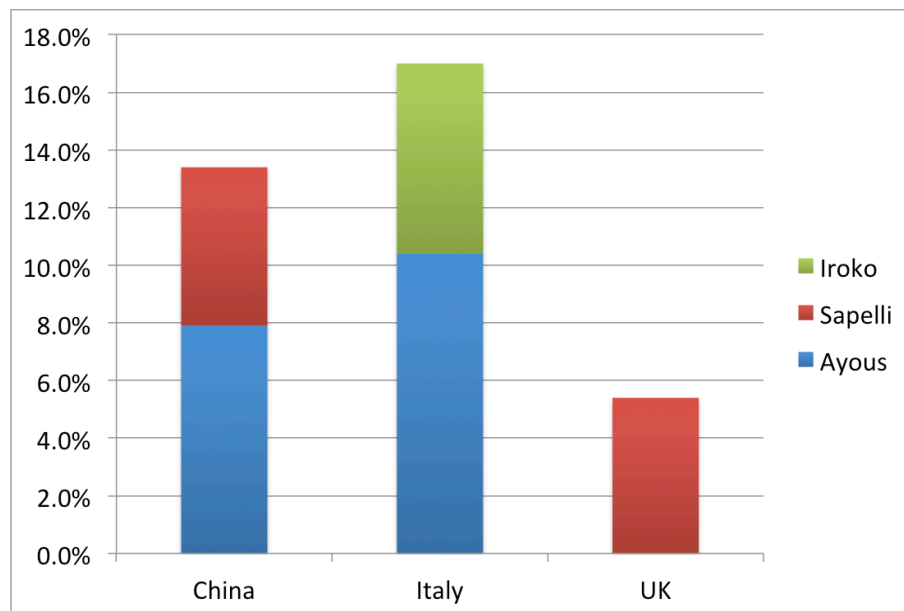
What species go where? (2013)

- Only >5% of total shown

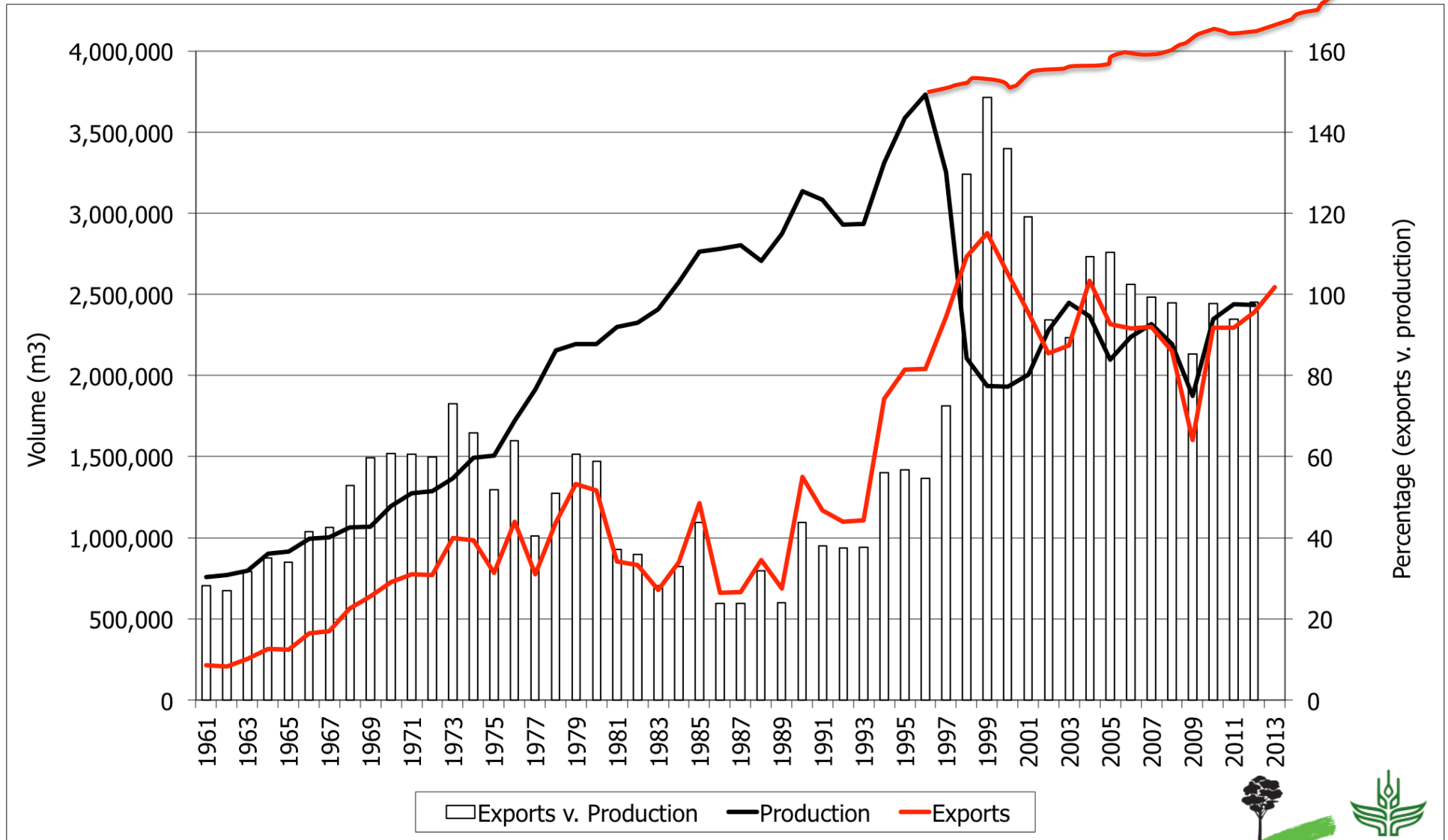
Logs



Sawnwood



Production and exports (in/formal)



So, what to check?

- Cameroon or ...?
- Certified/Managed concession or ...?
- Must have paid taxes (certificates of solvency)
- Must have been inventoried, authorised and declared

- And if you feel really inspired...





**TRANSPARENCY
IS BEAUTIFUL
IF YOU HAVE NOTHING TO HIDE**

GRAZIE



This research was carried out as part of



RESEARCH PROGRAM ON
Forests, Trees and
Agroforestry



CIFOR advances human wellbeing, environmental conservation and equity by conducting research to inform policies and practices that affect forests in developing countries. CIFOR is a CGIAR Consortium Research Center. CIFOR's headquarters are in Bogor, Indonesia and it also has offices in Asia, Africa and South America.



cifor.org

blog.cifor.org